

SEPARATOR P20G TYPE

*Configuration of the
P20G separator by Means
of the LPCon program*



Contents

1. CONFIGURATION OF THE P20G SEPARATOR BY MEANS OF THE LPCon PROGRAM	5
1.1. Configuration of the Separator Input and Output Kind	6
1.2. Configuration of the Individual Characteristic of the Analog Output	7
1.3. Configuration of the Analog Output at Overflows	8
1.4. Readout of the Measured Value	10

1. CONFIGURATION OF THE P20G SEPARATOR BY MEANS OF THE LPCon PROGRAM

The LPCon program is destined for the configuration of the P20G separator. One must connect the separator through the PD14 programmer and configure the connection, choosing -> **Connection configuration** from the **Options** menu (for the P20G separator, we choose: address 1, 9600 kb/s baud rate, RTU 8N2 mode, timeout 2000, and the suitable COM port under which the PD14 programmer driver has been installed).

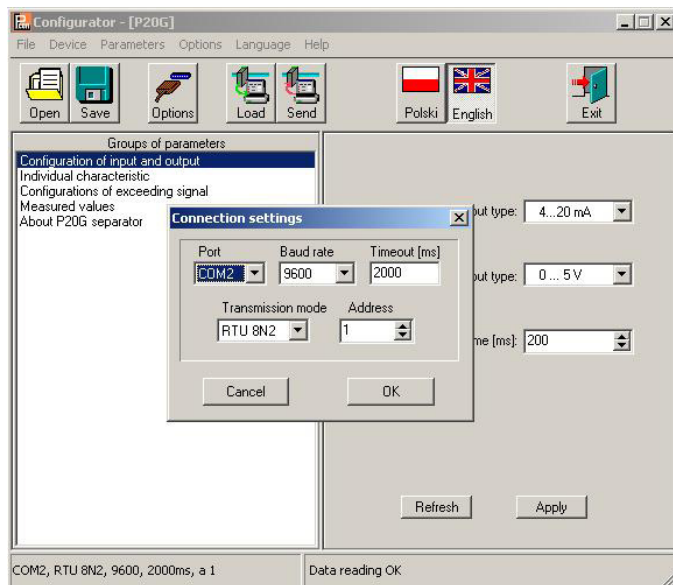


Fig. 1. Connection configuration with the P20G separator

After the connection configuration, one must choose **Transducers P** -> **P20G** from the **Devices** -> menu, and next click the readout icon in order to read out all parameters. One can also read out parameters individually in each group by clicking the **Refresh** button.

To change parameters, one must write the new value in the parameter window and click the **Apply** button.

1.1. Configuration of the Separator Input and Output Kind.

In the parameter group „ Configuration of input and output” 3 lists are available by means of which, one can choose the input type, the output type, and the measurement averaging time.

One must confirm changes clicking the **Apply** button.

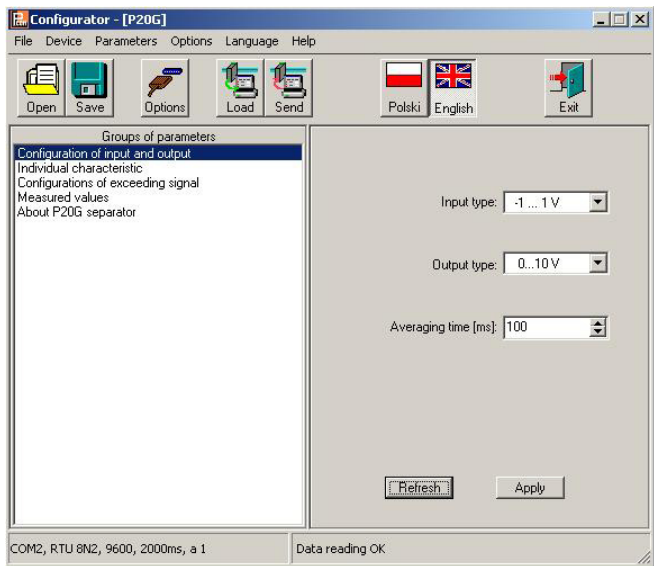


Fig. 2. View of the „Input configuration” window of the LPCon program

1.2. Configuration of the Individual Analog Output Characteristic

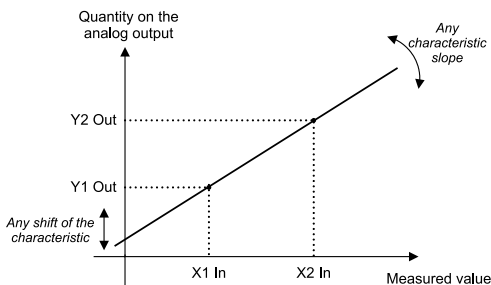
The P20G separator enables the conversion of measured values into the output signal on the base of a individual linear characteristic of the analog output. On the base of given by the user coordinates of two points, the separator determines (from the equation system) coefficients **a** and **b** of the individual characteristic.

$$\begin{cases} Y1Out = a \cdot X1In + b \\ Y2Out = a \cdot X2In + b \end{cases}$$

where:

X1 In and X2 In – measured value

Y1 Out and Y2 Out – expected value on the output



Value X1 In on the transducer input => value Y1 Out on the analog output
Value X2 In on the transducer input => value Y2 Out on the analog output
other characteristic points are calculated

Fig. 3. Individual characteristic of analog outputs

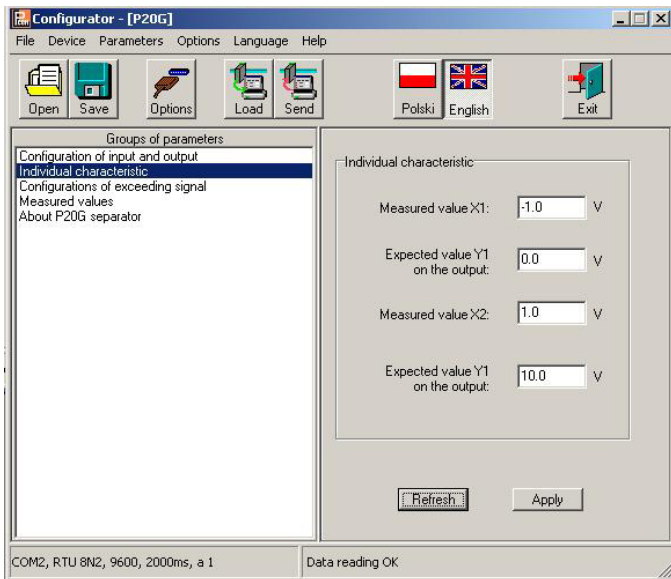


Fig. 4 View of the „Individual characteristic” window of the LPCon program

1.3. Configuration of the Analog Output at Overflows

In the P20G separator, the user has the additional possibility to configure the behaviour of the analog output after the occurrence of a signal overflow on the measuring input.

The service of overflows is switched off by default – then, after the signal overflow on the input, the output is still proportional to the input

steered beyond the basic range of the output. After the overflow service switching on, the user can define himself by which value the output will be steered after the occurrence of an upper or lower overflow.

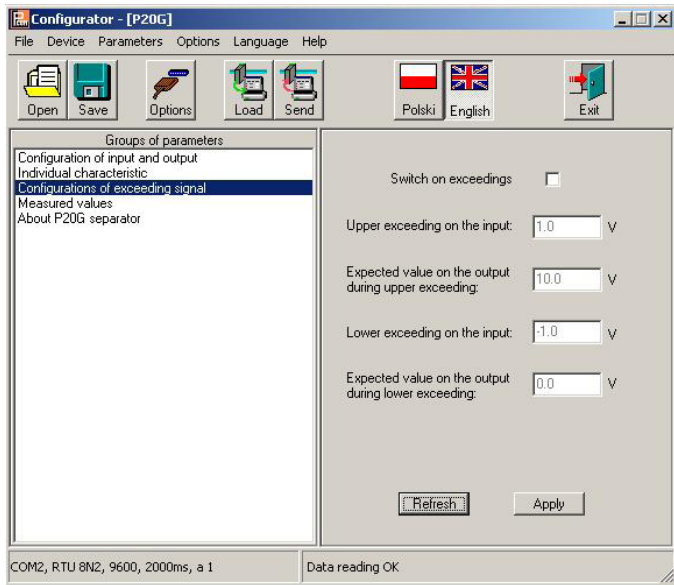


Fig.5. View of the window „ Output configuration at overflows” of the LPCon program

1.4. Readout of Measured Value

By means of the LPCon program, one can also read out the currently measured value, check the output steering, read out the serial number and the program version. These quantities are situated in the *Measured values* window.

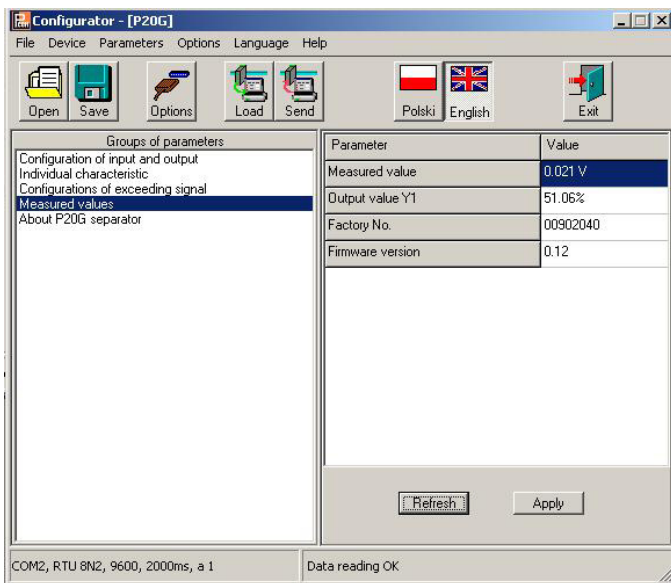


Fig. 6. View of the window „Measured values” of the LPCon program



Lubuskie Zakłady Aparatów Elektrycznych LUMEL S.A.

ul. Sulechowska 1, 65-022 Zielona Góra

<http://www.lumel.com.pl>

Dział Sprzedaży Krajowej

Informacja techniczna: tel. 068 329 51 80, 068 329 52 60, 068 329 53 06,
068 3295 374

e-mail: sprzedaz@lumel.com.pl

Przyjmowanie zamówień: tel. 068 329 52 07, 068 329 52 09, 068 329 52 91,
068 329 53 41, 068 329 53 73,

fax 068 325 56 50